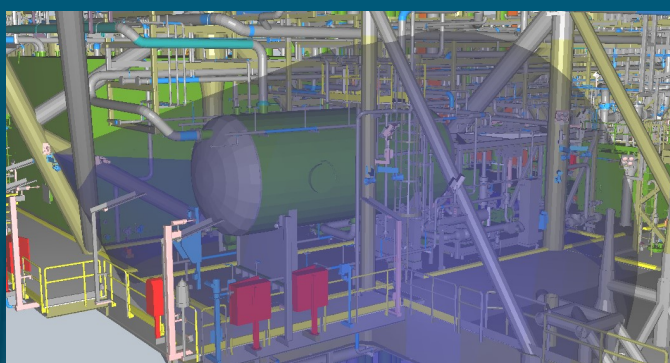
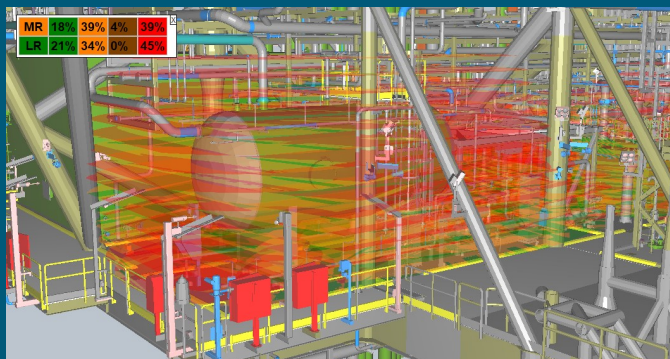


MICROPACK
FIRE & GAS

HazMap3D

3D FIRE AND GAS MAPPING SOFTWARE DATA SHEET



Industry Standard 3D Fire and Gas Mapping Software from the pioneers in Fire and Gas Mapping Studies.

Micropack's name is synonymous with Fire and Gas Mapping with our first mapping study being conducted more than 30 years ago.

HazMap3D is our second generation modelling tool, designed for fire and gas engineers, by fire and gas engineers.

Features and Benefits

- Easy to import 3D CAD designs
- Simple to select design criteria
 - Operator specific
 - ISA 84.00.07
- All major manufacturer and detector models are listed
- Quickly navigate in and around the true 3D model.
- See the obstructed flame detector field of view
- Capture detector point of view for commissioning assistance
- Standard report generation tools detail, detector count, tag, location, viewing direction, angle of elevation and coverage contribution
- Enhanced coverage assessment through the generation of user defined vertical "coverage slices"
- Quickly and easily assess any number of fire zones

Reduce costs by cutting design time

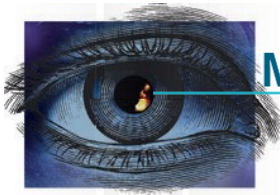
- Swap between design review models with ease
- Detector placement optimisation using geographic and / or scenario based mapping
- Nested fire grades can be added almost instantly, without data manipulation
- HazMap3D inserts the same detector as the previous one used in just two clicks

Reduce Complexity through pre-built libraries

- End User performance requirements are built-in
- Detector characteristics for all major detector manufacturers are built-in

Fast Generation of Coverage Reports

- Easy on the eye visuals detail compliance with project standards
- Coverage contributions, per detector, are calculated to allow true design optimisation for CAPEX and OPEX savings
- HazMap3D viewer can be used for client walk through reviews thereby reducing time to final report

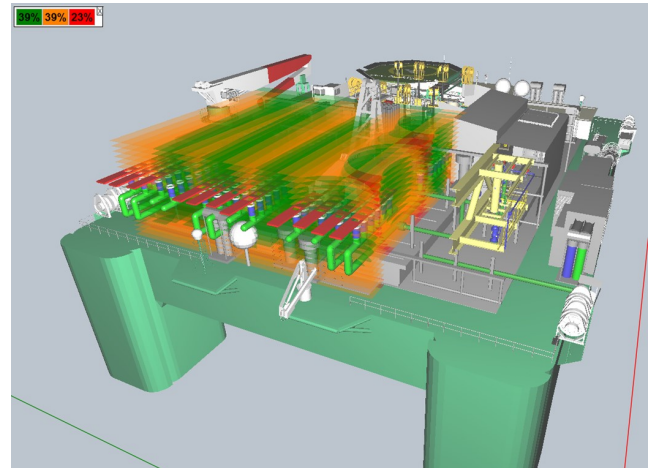
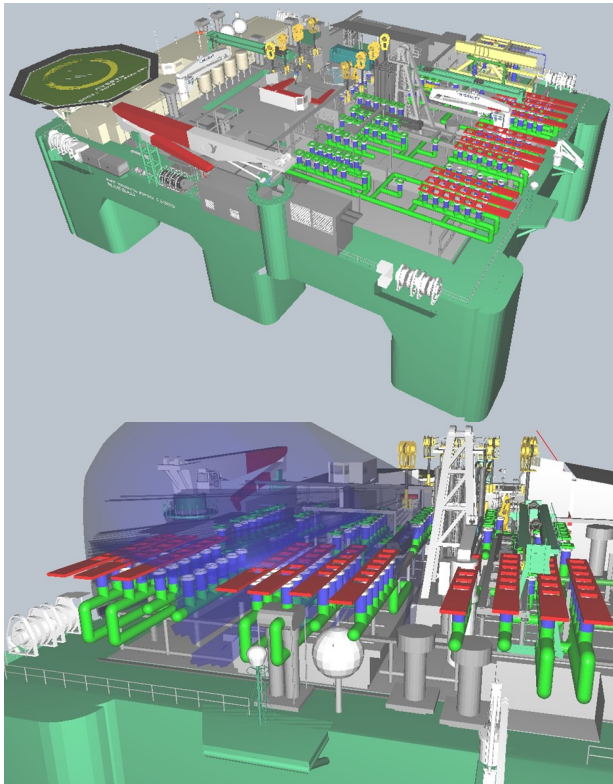


MICROPACK
FIRE & GAS

HazMap3D

3D Fire and Gas Mapping Software

HazMap3D allows for simple placement of flame and gas detectors within your model. The images here illustrate a flame and gas detection design and assessment with coverage percentages conveniently displayed.



3D Flame Mapping



3D Gas Mapping



Smoke & Heat Design



Toxic Gas Mapping



Ultrasonic Leak Mapping



Beacons and Sounders

